

TCV4

28.0 × 28.0 × 25.0

Features
<ul style="list-style-type: none"> • Small size and light weight. • Heavy contact load (40A). • Suitable for automobile and lamp accessories application. • PC board mounting and direct insert mounting available.

Ordering Information		
<p>TCV4 <u>1C</u> <u>12VDC</u></p> <p>1 2 3</p>		
<table border="0"> <tr> <td style="width: 50%;"> 1 Part number: TCV4 3 Coil rated voltage(V): 3VDC,5VDC,6VDC,9VDC,12VDC 15VDC,24VDC </td> <td style="width: 50%;"> 2 Contact arrangement: 1A:a group of normally open 1B:a group of normally closed 1C:Set of conversions </td> </tr> </table>	1 Part number: TCV4 3 Coil rated voltage(V): 3VDC,5VDC,6VDC,9VDC,12VDC 15VDC,24VDC	2 Contact arrangement: 1A:a group of normally open 1B:a group of normally closed 1C:Set of conversions
1 Part number: TCV4 3 Coil rated voltage(V): 3VDC,5VDC,6VDC,9VDC,12VDC 15VDC,24VDC	2 Contact arrangement: 1A:a group of normally open 1B:a group of normally closed 1C:Set of conversions	

Contact Data

Contact Arrangement	1A(1H) (SPSTNO)	1B(1D)(SPSTNC)	1C(1Z)(SPDT(B-M))
	1A	1B	1C
Contact Rating (resistive)	40A/14VDC 20A/24VDC	30A/14VDC 20A/24VDC	NO:40A/14VDC NC:30A,40A/14VDC 15A,20A/24VDC
Max. Switching Power	630W		
Max. Switching Voltage	75VDC Switching Current:40A		
Contact Resistance or Voltage drop	≤ 30mΩ		
Operation life	Electrical	10 ⁵	
	Mechanical	10 ⁷	

Coil Parameter

Coil voltage VDC		Coil resistance Ω ± 10%	Pick up voltage VDC(max) (75%of rated voltage)	Release voltage VDC(min) (10% of rated voltage)	Coil power consumption W	Operate Time ms	Release Time ms
Rated	Max.						
3	3.9	5.6	2.25	0.3	1.6	<7	<5
5	6.5	15.6	3.75	0.5			
6	7.8	22.5	4.50	0.6			
9	11.7	50.6	6.75	0.9			
12	15.6	90	9.00	1.2			
24	31.2	360	18.0	2.4			
48	62.4	1440	36.0	4.8			
3	3.9	4.7	2.25	0.3	1.9	<7	<5
5	6.5	13.2	3.75	0.5			
6	7.8	18.9	4.50	0.6			
9	11.7	42.6	6.75	0.9			
12	15.6	75.8	9.00	1.2			
24	31.2	303.2	18.0	2.4			
48	62.4	1212.6	36.0	4.8			

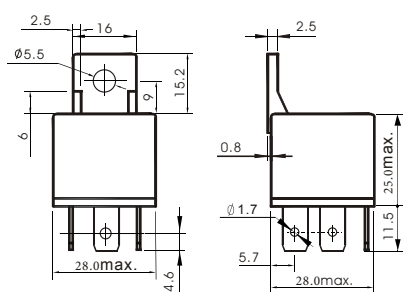
CAUTION: 1.The use of any coil voltage greater than the rated coil voltage will compromise the operation of the relay.
 2.Pickup and release voltage are for test purposes only and are not to be used as design criteria.

Operation condition

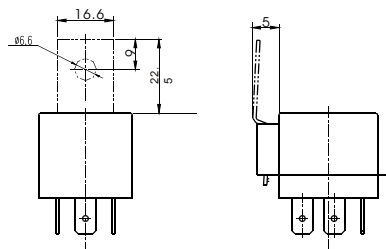
Insulation Resistance	100M min (at 500VDC)
Dielectric Strength Between contacts Between contact and coil	50Hz 500V 50Hz 750V
Shock resistance	strength: 147m/s ² 11ms
	stability: 10m/s ² 11ms
Vibration resistance	10Hz~40Hz double amplitude 1.5mm
Terminals strength	8N 4N PC type
Solderability	260 °C ± 5 °C 5s ± 0.5s
Ambient Temperature	-40°C ~125°C
Relative Humidity	85% (40) °C
Mass	35g

Dimensions

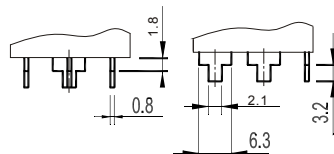
unit: mm



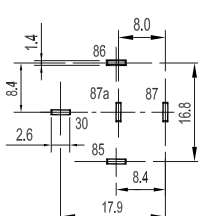
Plastic backrest



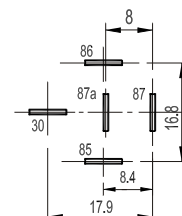
Metal backrest



PCB type terminal

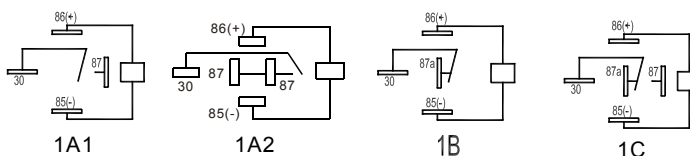


PCB type



Plug in type

Mounting (Bottom view)



Wiringdiagram(Bottomview)

Reference Data

